

Thermoplastic hoses

The references MAP and MCE are high pressure flexible hoses made of a polyester elastomer tube, reinforced with a braid of polyaramid yarn, a polyester interlay, a single braid of carbon steel wire and an outer polyurethane cover.

Minimum burst pressure: 2.800 kg/cm² / 40.000 psi

MAPS-1,5 flexible hose is made of an inner polyethylene tube (POM), with four spiral steel wire braids and a polyamide cover.

Minimum burst pressure: 4.400 kg/cm² / 63.800 psi

As an option, the 1,5 m hoses are supplied with a quick coupler included.

The MEC-3 and MEC-6 hoses are specially designed for operation with electric powered pumps.



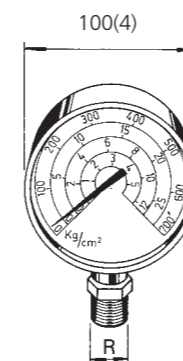
Ref.	Working pressure		Interior		Interior		Connection thread	Quick coupler
	kg/cm ²	psi.	Ø mm	in.	m.	in.		
MAP-06	700	10000	6,4	1/4	0,6	23,6	3/8 x 18 NPT	----
MAP-1	700	10000	6,4	1/4	1	39,4	3/8 x 18 NPT	----
MAP-1,5	700	10000	6,4	1/4	1,5	59	3/8 x 18 NPT	----
MAP-2	700	10000	6,4	1/4	2	78,8	3/8 x 18 NPT	----
MAP-3	700	10000	6,4	1/4	3	118	3/8 x 18 NPT	----
MAP-6	700	10000	6,4	1/4	6	236	3/8 x 18 NPT	----
MAPS-1,5	1760	25520	5	19/16	1,5	59	1/4 x 19 GAS	----
MCE-3	700	10000	9,8	3/8	3	118	3/8 x 18 NPT	----
MCE-6	700	10000	9,8	3/8	6	236	3/8 x 18 NPT	----
A-5555	700	10000	6,4	1/4	1,5	59	3/8 x 18 NPT	A-5507-M
A-5588	700	10000	6,4	1/4	1,5	59	3/8 x 18 NPT	A-5506-M
A-5559	1760	25520	5	19/16	1,5	59	1/4 x 19 GAS	A-5537-H

Glycerine gauges

The gauges permit the reading of the pressure generated by the pump or the force applied by the cylinder, which provides safety of use, avoids damage to the equipment and guarantees longer life.

Precision: ± 2,5%.

The pressure and force are indicated in kg/cm², psi and tonnes.



Ref.	Used with	Interior	Connection thread R
A-5580G	CSRA-5/CSRA-11/CSB-11/CSE-5/CSE-11 SERIES	5-11 TNS	3/8 GAS
A-5581G	CSRA-16/CSRA-23/CSB-23/CSE-23/CDRA-23 SERIES	16-23 TNS	3/8 GAS
A-5582G	CSRA-31/CSRA-55/CSB-31/CSB-55/CSE-31/CSE-55/CSF-31/CSF-55/CDRA-31/CDRA-55 SERIES	31-55 TNS	3/8 GAS
A-5583G	CSRA-93/CSB-93/CSE-93/CSF-93/CDRA-93/CSE-31/CSE-55 SERIES	93 TNS	3/8 GAS
A-5584G	CSH-12/CSH-20 SERIES	12-20 TNS	3/8 GAS
A-5585G	CSH-30/CSH-60/CDH-30/CDH-60 SERIES	30-60 TNS	3/8 GAS
A-5586G	GENERAL APPLICATIONS	0-700 kg/cm ²	3/8 GAS
A-5587G	USO GENERAL APPLICATIONS	0-1600 kg/cm ²	1/2 NPT

Coupling

The high flow quick couplers allow a fast and safe connection of the different components in the hydraulic applications. They consist of two halves, oil tight, called male and female, and have dust caps to prevent entry of dirt.

Supplied according to the reference on the chart.

A-5507

Maximum flow: 17 l/min/1.038 in³/min. Pressure: up to 700 kg/cm²/10.000 psi.



A-5506

Maximum flow: 2 l/min/122 in³/min. Pressure: up to 700 kg/cm²/10.000 psi.



A-5537

Maximum flow: 7 l/min/427 in³/min. Pressure: up to 1.500 kg/cm²/21.430 psi.



Referencia	Description	Characteristics
A-5507	Complete coupler	
A-5507-M	Male quick coupler	
A-5507-H	Female quick coupler	
A-5506	Complete coupler	
A-5506-M	Male quick coupler	
A-5506-H	Female quick coupler	
A-5537	Complete coupler	
A-5537-H	Male quick coupler	
A-5537-M	Female quick coupler	

Adapters

These adapters allow an easy way of fitting the gauge into cylinder or pump.



On page 7 of this catalogue, instructions are given for better information and use of the accessories described. Read pages 4 and 5, carefully.

Ref.	Description	Working pressure	Characteristics
		kg/cm ² psi.	
A-5501	Gauge adapter	700 10000	
A-5558	Gauge adapter	1500 21430	
MGK-15	Gauge adapter plug	700 10000	
NAP-3	Gauge adapter plug	1500 21430	