



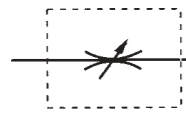
## Valves

A hydraulic application can be effected through several configurations, some of which are indicated on page 7 of this catalogue. None of the configurations described could be carried out without the accessories and fittings described.



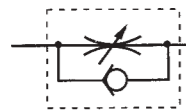
### A-5509 Shutoff valve

Shuts the oil flow. It also locks the load on a raised cylinder.



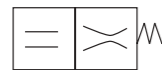
### A-5510 Safety valve

Locks the load on a raised cylinder.



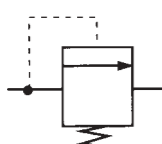
### A-5570 Lowering control valve

Prevents sudden lowering of load by producing a resistance to the oil flow.



### A-5538 Safety relief valve

Avoids accidental overpressure.



Reference	Description	Working pressure		Characteristics
		kg/cm <sup>2</sup>	psi.	
A-5509	Shutoff valve	700	10000	
A-5510	Safety valve	700	10000	
A-5570	Lowering control valve	700	10000	
A-5538	Safety relieve valve	700	10000	

## Connectors. Spares

### A-5583 and A-5574. Manifolds

Although only two manifolds are described in this catalogue, we can manufacture and supply other manifolds with the number of ways required

### MEGA hydraulic oil

High quality hydraulic oil for the essential parts of the hydraulic tools

Indispensable for a continuous or intensive use of the MEGA pumps and cylinders.

Delivered in 2 and 5 litre plastic container.

A-5535. 2 litre plastic container

A-5536. 5 litre plastic container



### Repair kits

A repair kit is available for every hydraulic item in this catalogue.

The reference of the article for which the kit is intended should be clearly indicated.



Reference	Description	Working pressure		Characteristics
		kg/cm <sup>2</sup>	psi.	
A-5583	Five-way manifold	700	10000	
A-5574	Two-way manifold	1500	21430	
A-5511	Male connector	700	10000	
A-5579	Male connector	700	10000	
A-5513	Mixed connector	700	10000	
A-5589	Mixed connector	700	10000	
A-5512	Female connector	700	10000	
A-5590	Female connector	700	10000	
Y-2/1160	Coned plug	700	10000	
A-5591	Male plug	700	10000	
A-5514	Elbow	1500	21430	
A-5566	Metallplastic washer	1500	21430	